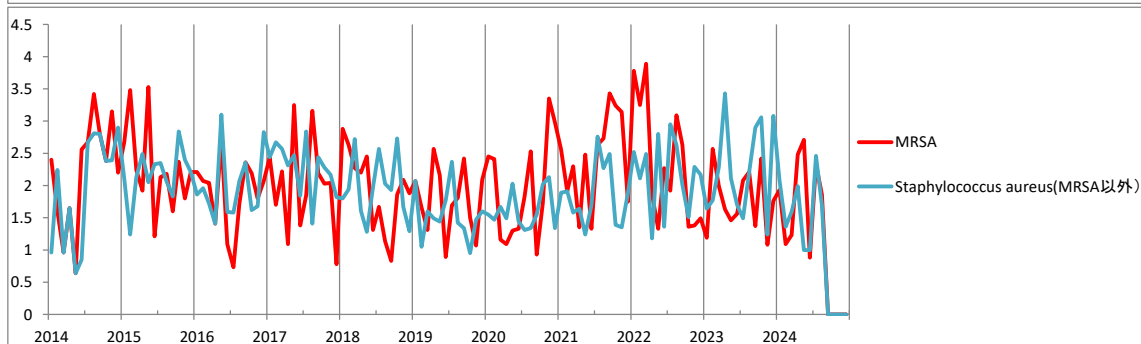
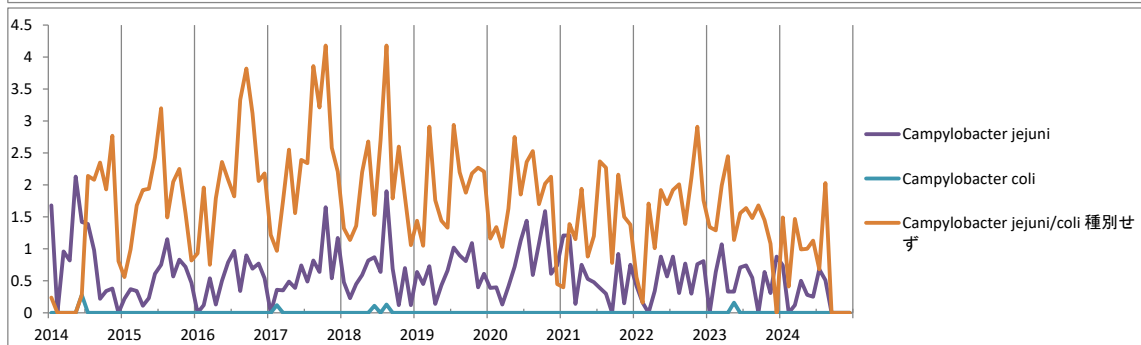
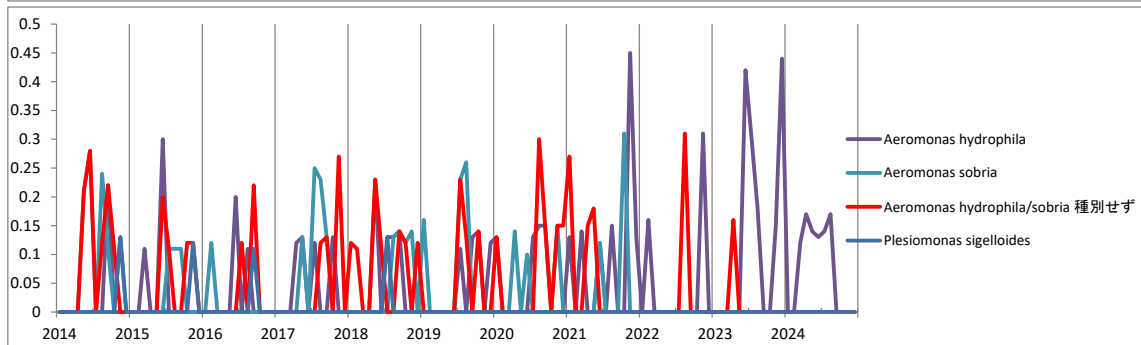
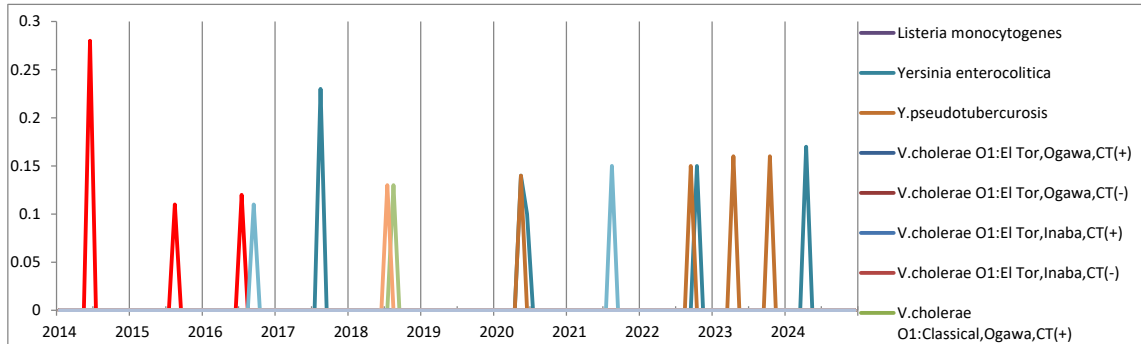
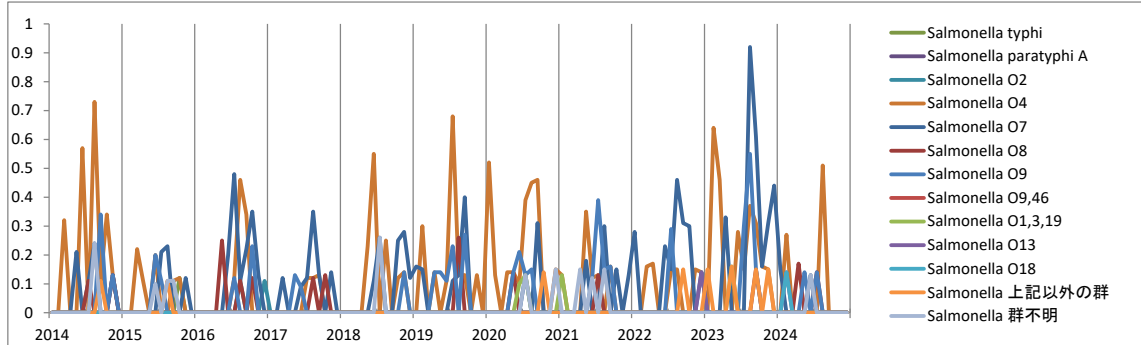
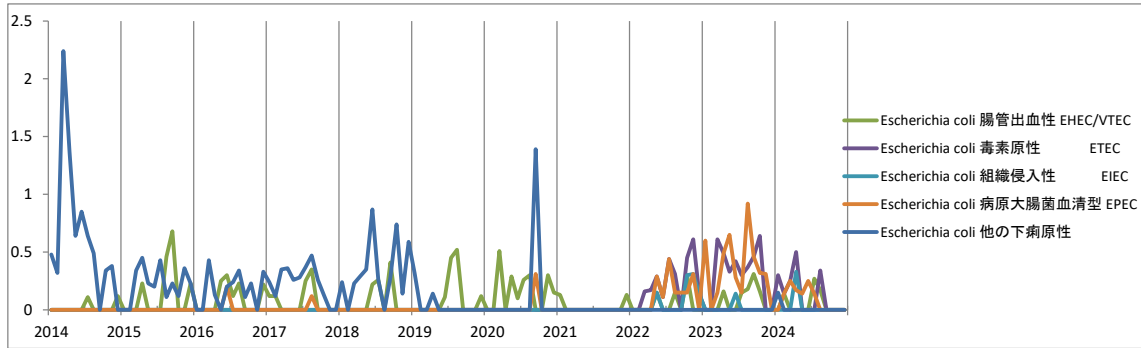


医療機関の病原体検出情報報告書 2024年（暫定版）

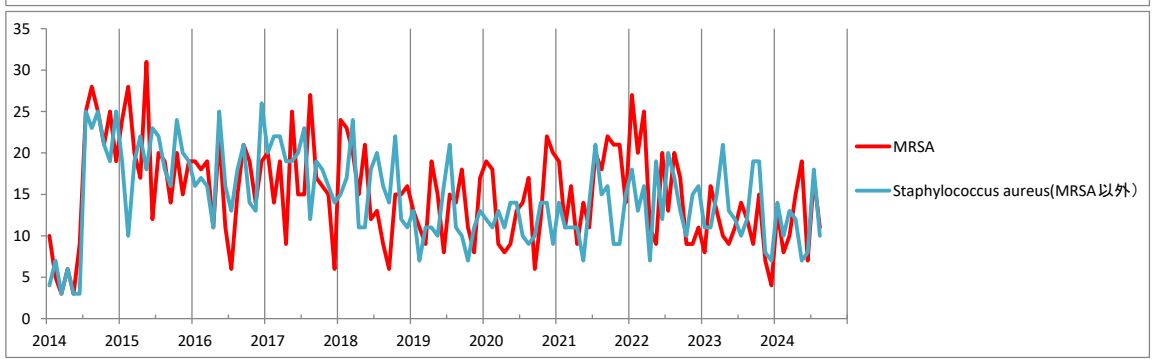
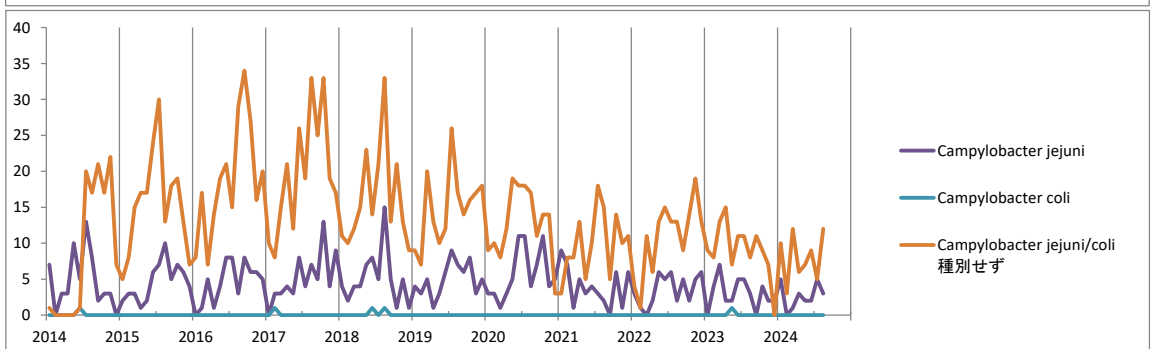
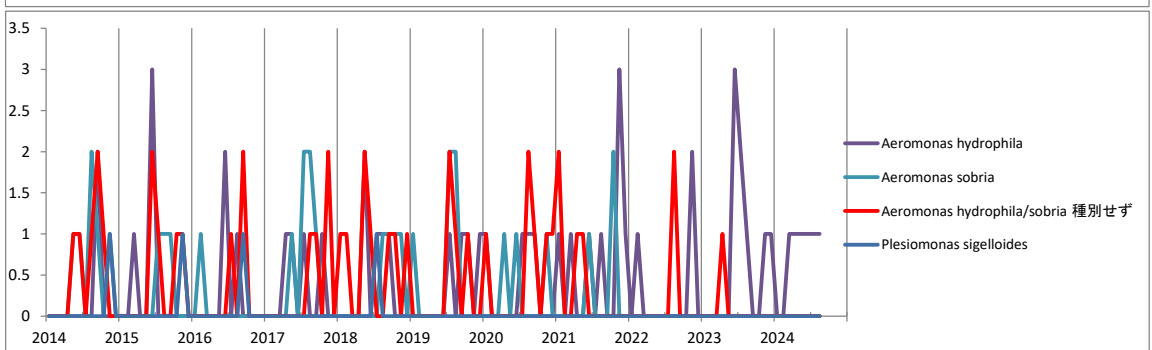
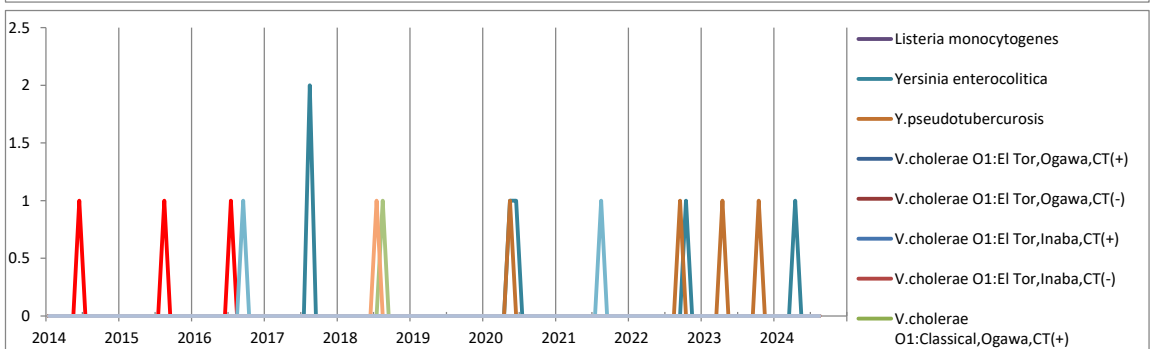
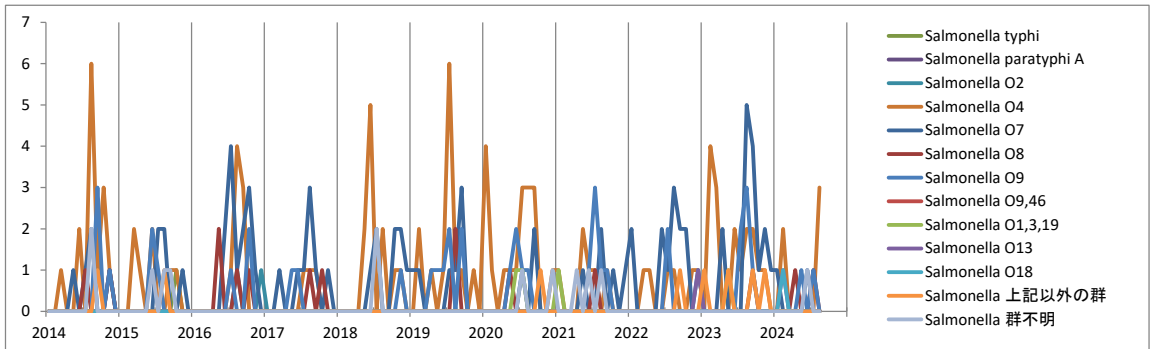
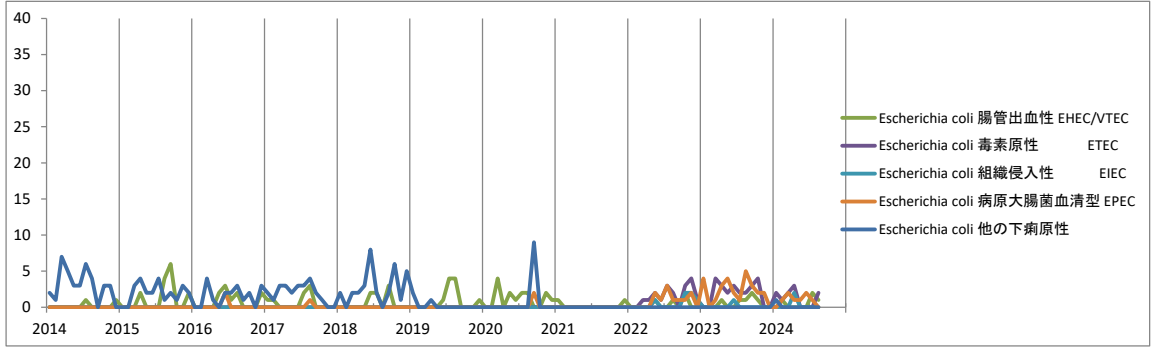
臨床的に重要な薬剤耐病原体														
病原体名	検体数 材料	年合計 32,914	1月	2月	3月	4月	5月	6月	7月	8月	9月	10月	11月	12月
			MRSA	尿	136	18	16	18	16	21	24	14	9	
MRSA	鼻腔	137	21	18	7	17	15	19	24	16				
MRSA(その他材料、不明)		118	128	127	145	154	183	115	144	122				
小計		1391	167	161	170	187	219	158	182	147	0	0	0	0
MDRP:M-D-R-P.aeruginosa	尿	1								1				
MDRP:M-D-R-P.aeruginosa	血液													
MDRP:M-D-R-P.aeruginosa	創部(膿)													
MDRP:M-D-R-P.aeruginosa	喀痰	2	1			1								
MDRP:M-D-R-P.aeruginosa(")		1				1								
小計		4	1	0	0	2	0	0	0	1	0	0	0	0
MBL:M-β-L-P.aeruginosa	便													
MBL:M-β-L-P.aeruginosa	尿													
MBL:M-β-L-P.aeruginosa	喀痰	1		1										
MBL:M-β-L-P.aeruginosa(")														
小計		1	0	1	0	0	0	0	0	0	0	0	0	0
PISP/PRSP:S.pneumoniae	尿													
PISP/PRSP:S.pneumoniae	喀痰													
PISP/PRSP:S.pneumoniae	咽頭													
PISP/PRSP:S.pneumoniae	髄液													
PISP/PRSP:S.pneumoniae	鼻腔													
PISP/PRSP:S.pneumoniae(")														
小計		0	0	0	0	0	0	0	0	0	0	0	0	0
PISP:P-I-S.pneumoniae	血液													
PISP:P-I-S.pneumoniae	鼻腔													
PISP:P-I-S.pneumoniae(")														
小計		0	0	0	0	0	0	0	0	0	0	0	0	0
PRSP:P-R-S.pneumoniae	喀痰	6	1	1		2			1	1				
PRSP:P-R-S.pneumoniae	鼻腔	1							1					
PRSP:P-R-S.pneumoniae	耳漏													
PRSP:P-R-S.pneumoniae	創部(膿)													
PRSP:P-R-S.pneumoniae(")		1	1											
小計		8	2	1	0	2	0	0	2	1	0	0	0	0
ESBL:E-S-β-L-K.pneumoniae	喀痰	46	8	6	3	5	10	4	5	5				
ESBL:E-S-β-L-K.pneumoniae(")		68	12	9	9	4	13	8	6	7				
ESBL:E-S-β-L-E.coli	尿	676	78	73	85	82	81	88	99	90				
ESBL:E-S-β-L-E.coli	血液	127	13	11	20	19	11	13	21	19				
ESBL:E-S-β-L-E.coli	腹水	19			17					2				
ESBL:E-S-β-L-E.coli(")		245	22	22	22	32	31	33	42	41				
ESBL:E-S-β-L-C.koseri	尿	5	1	1		1	1		1					
ESBL:E-S-β-L-C.koseri	創部(膿)													
ESBL:E-S-β-L-C.koseri(")														
小計		1186	134	122	156	143	147	146	174	164	0	0	0	0
BLNAR:β-L-N-A-R-H.influenzae	喀痰	24	5	1	5		3	5	1	4				
BLNAR:β-L-N-A-R-H.influenzae	鼻腔	18	1	3	1	1	4	2	3	3				
BLNAR:β-L-N-A-R-H.influenzae	創部(膿)	1					1							
BLNAR:β-L-N-A-R-H.influenzae(")		6	2			1	1		2					
小計		49	8	4	6	2	9	7	6	7	0	0	0	0
CD toxin:Clostridium difficile toxin		79	9	12	8	11	17	6	11	5				
その他(CRE等)														
合計		2,718	321	301	340	347	392	317	375	325				
非結核性抗酸菌症の病原体 検体数														
		2,672	355	290	316	318	316	301	413	363	0	0	0	0
<i>Mycobacterium kansasii</i>		7			1									
<i>Mycobacterium marimum</i>														
<i>Mycobacterium avium</i>		40	4	6	3	4	7	5	8	3				
<i>Mycobacterium intracellulare</i>		56	7	5	7	4	7	8	9	9				
<i>Mycobacterium xenopi</i>														
合計		97	11	11	11	8	14	13	17	12				

MRSA: methicillin-resistant-S.aureus(メチシリン耐性黄色ブドウ球菌)
MDRP: Multiple-Drug-Resistant-P.aeruginosa(多剤耐性緑膿菌)
MBL: Metallo-β-Lactamase-P.aeruginosa(メタロ-β-ラクタマーゼ産生緑膿菌)
PISP: Penicillin-Intermediate-S.pneumoniae(ペニシリン低感受性肺炎球菌)
PRSP: Penicillin-Resistant-S.pneumoniae(ペニシリン耐性肺炎球菌)
ESBL: Extended Spectrum beta(β) Lactamase(基質特異性拡張型βラクタマーゼ産生菌:肺炎桿菌、大腸菌、シトロバクター属)
BLNAR: β-Lactamase Negative Ampicillin Resistant Haemophilus influenzae(β-ラクタマーゼ陰性アンピシリン耐性ヘモフィルス属)
CD toxin: Clostridium difficile 産生毒
CRE: Carbanem-resistant enterobacteriaceae(カルバペネム耐性腸内細菌科細菌)

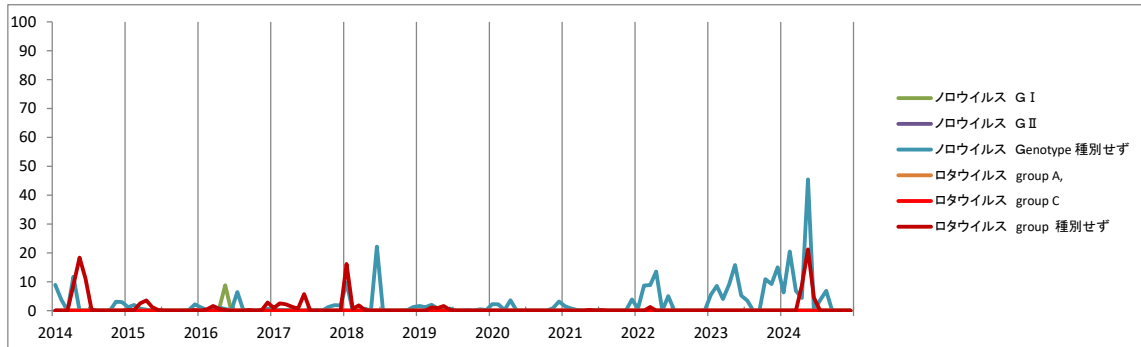
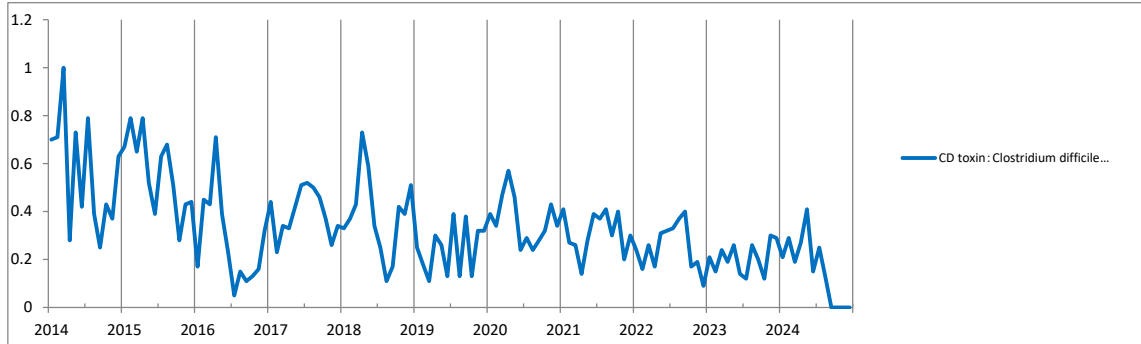
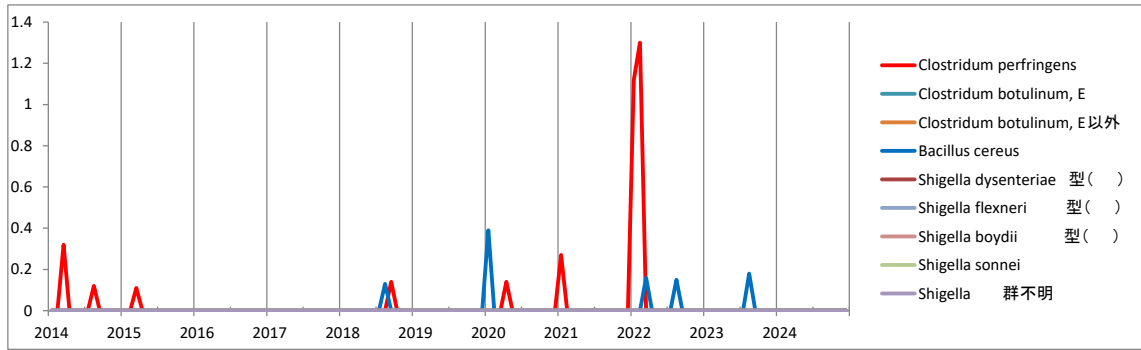
検体材料:糞便 検出率(%)



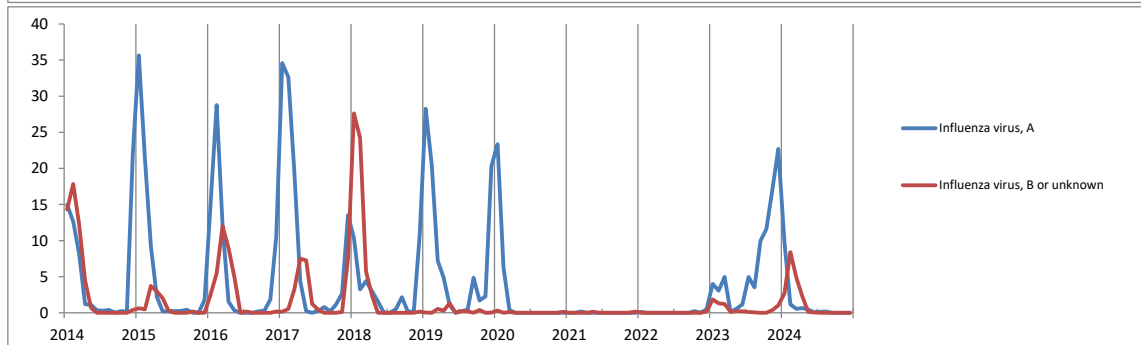
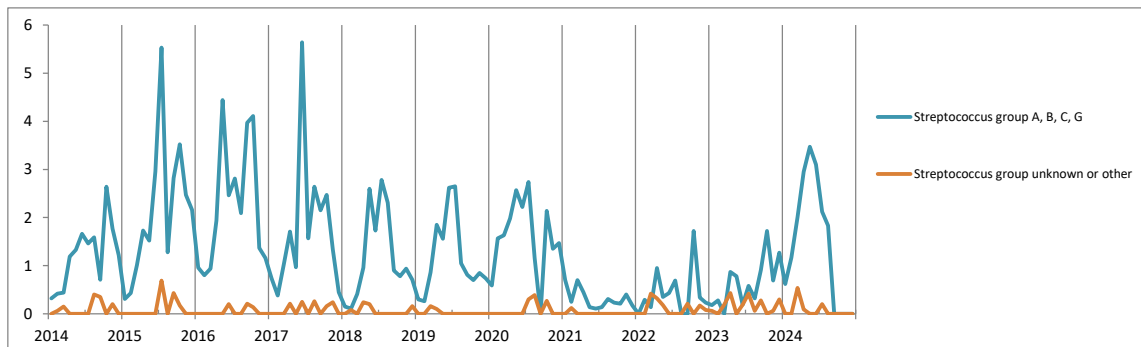
検体材料:糞便 検出数



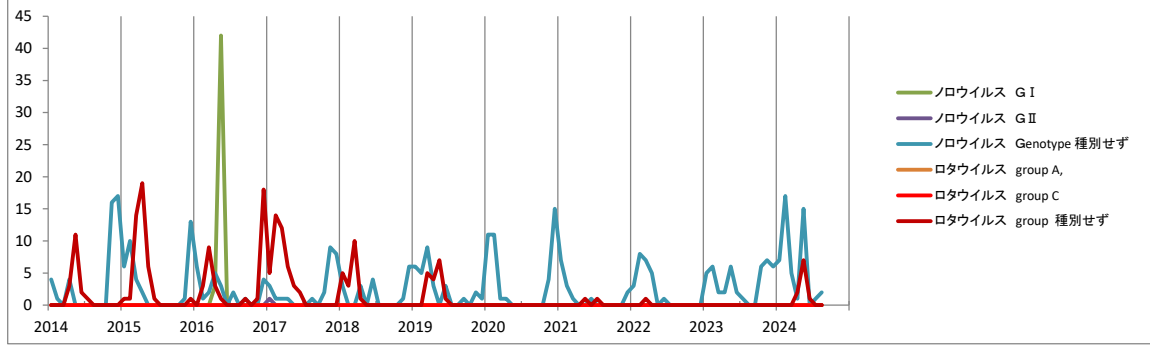
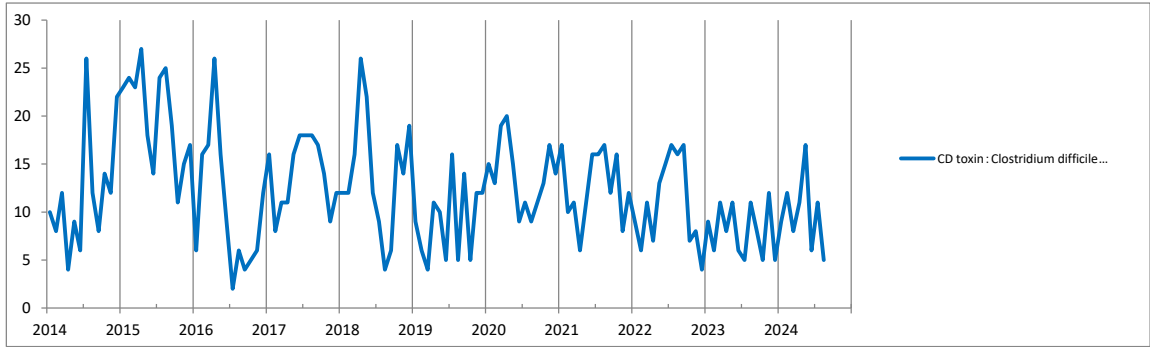
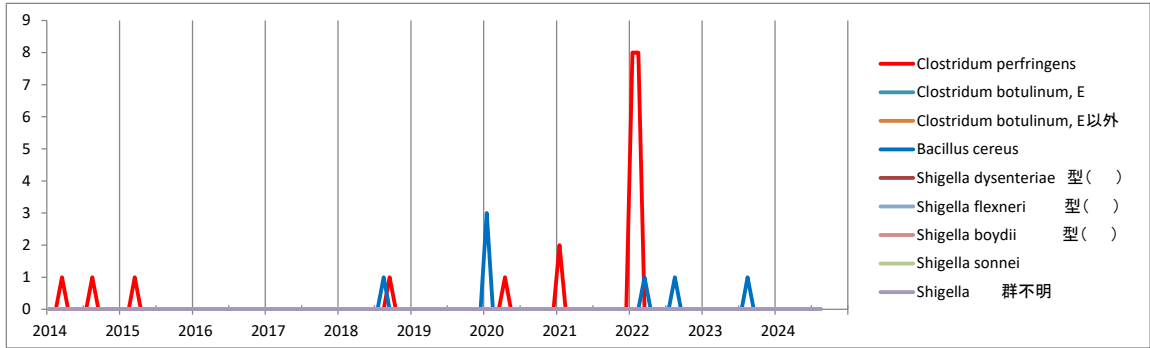
検体材料:糞便 検出率(%)



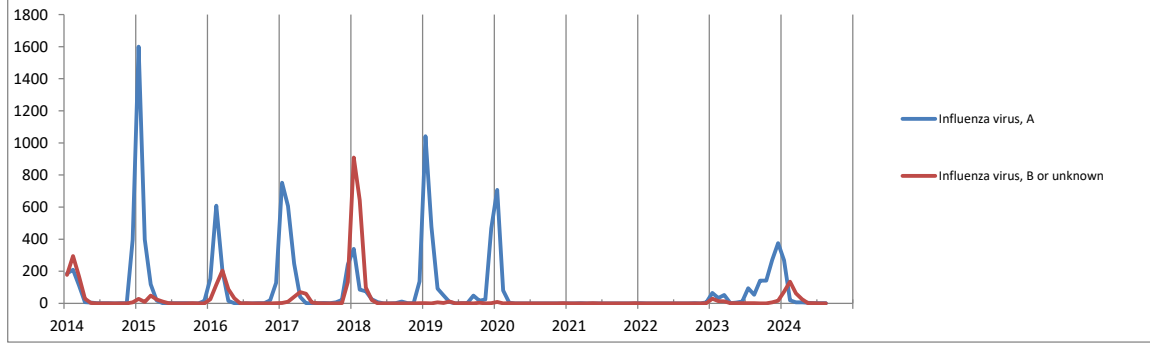
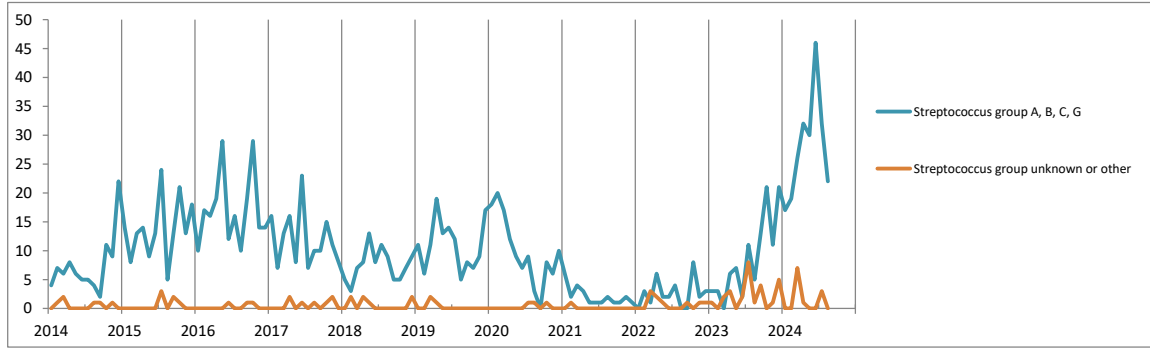
検体材料:咽頭・鼻咽喉 検出率(%)



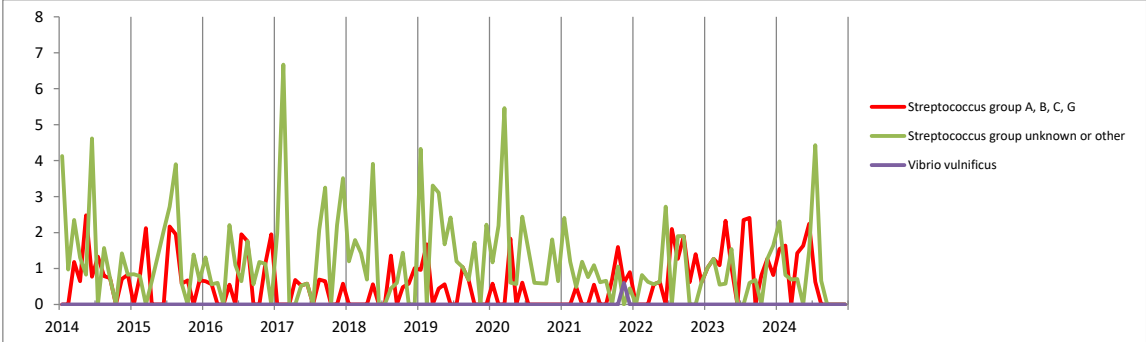
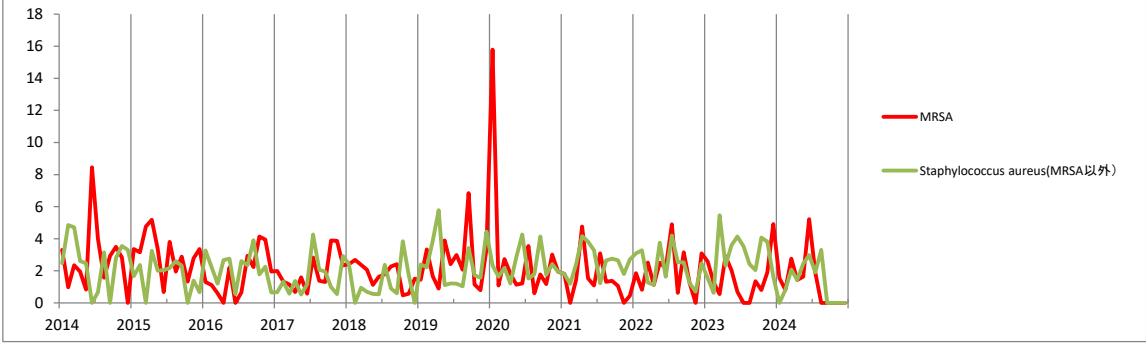
検体材料:糞便 検出数



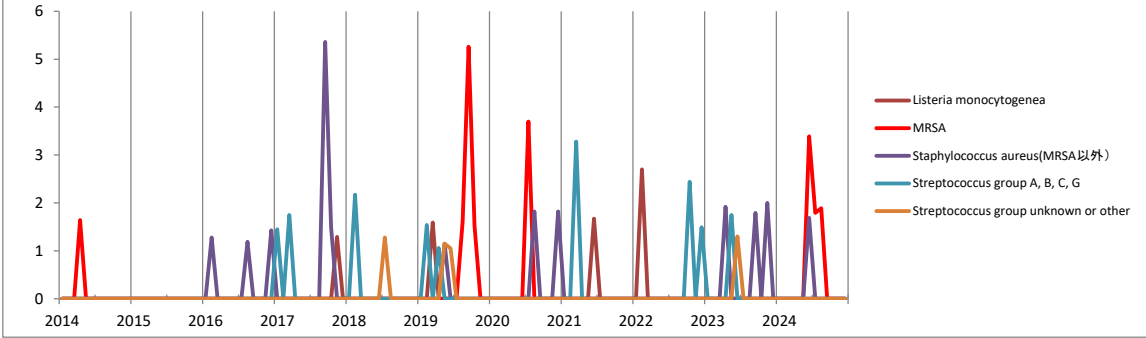
検体材料:咽頭・鼻咽喉 検出数



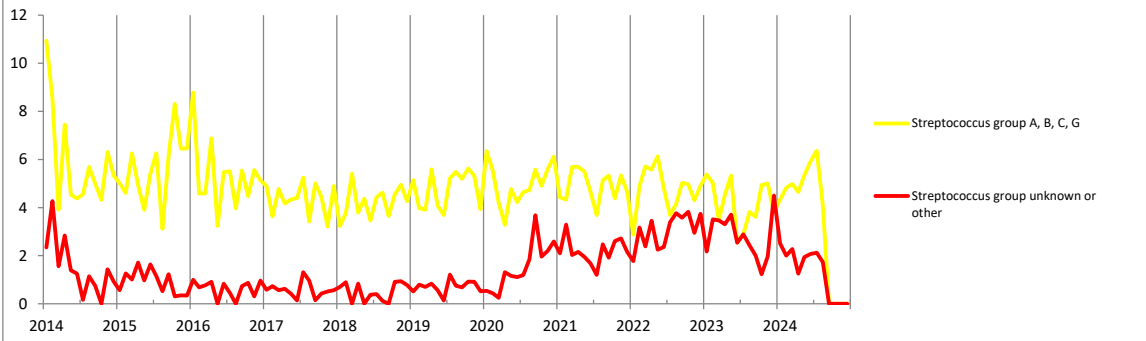
検体材料: 穿刺液 検出率(%)



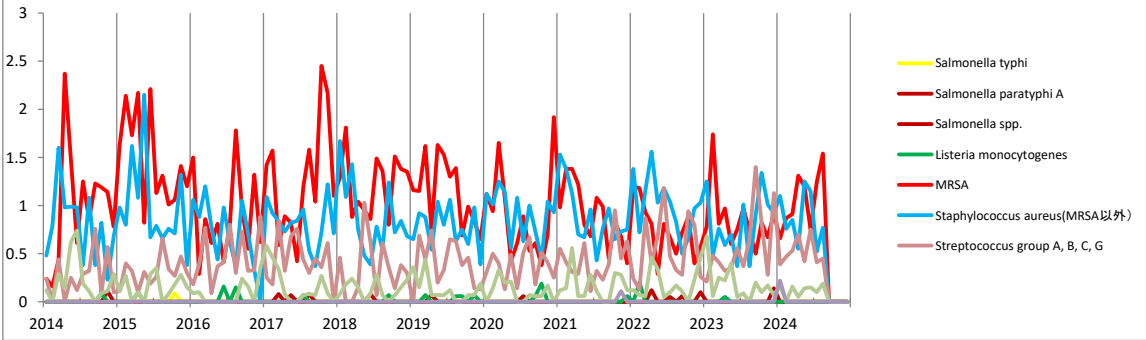
検体材料: 髄液 検出率(%)



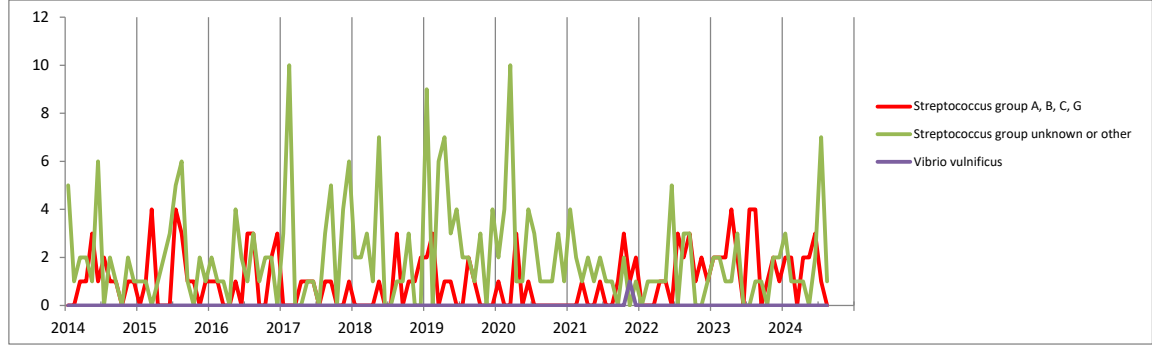
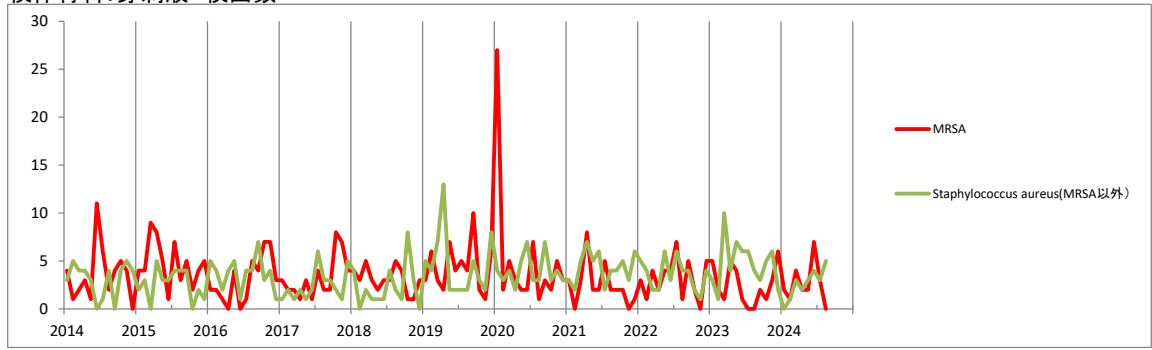
検体材料: 陰部 検出率(%)



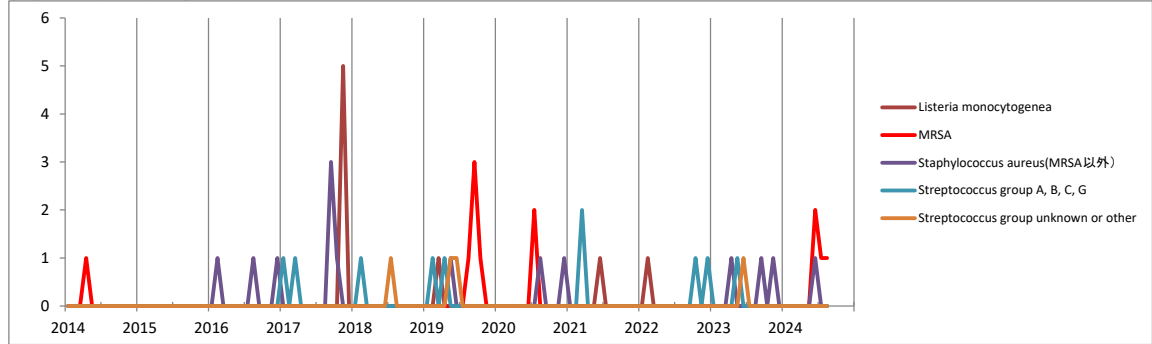
検体材料: 血液 検出率(%)



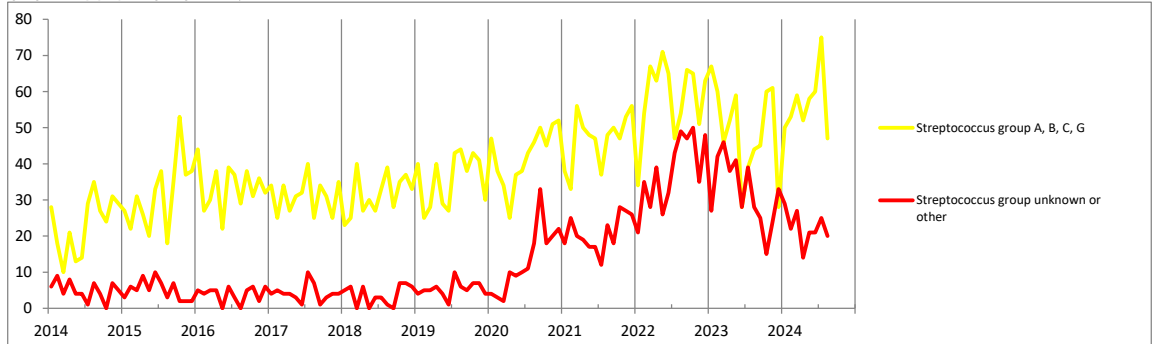
検体材料: 穿刺液 検出数



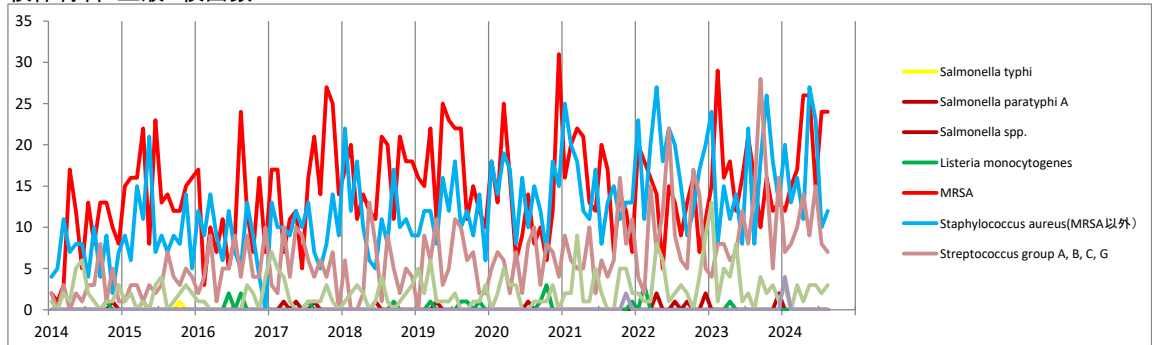
検体材料: 髄液 検出数



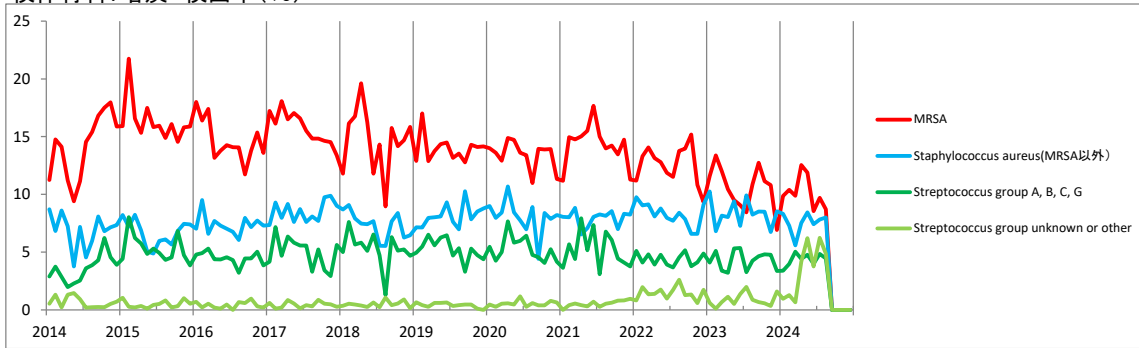
検体材料: 陰部 検出数



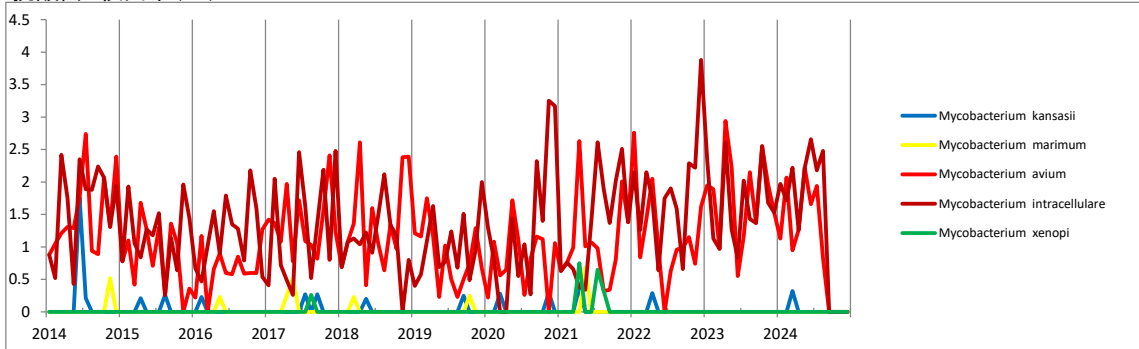
検体材料: 血液 検出数



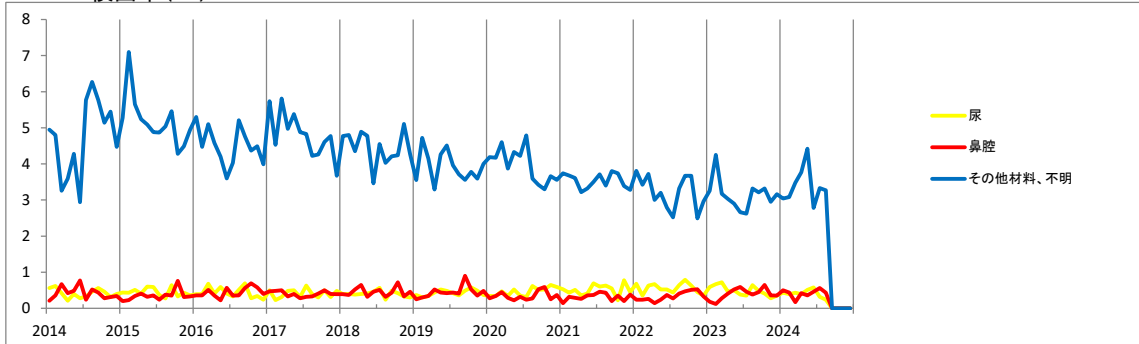
検体材料:喀痰 検出率(%)



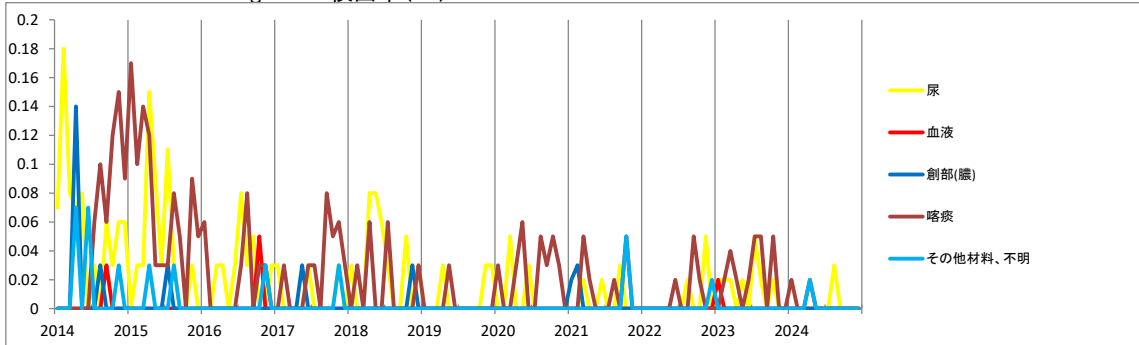
抗酸菌 検出率(%)



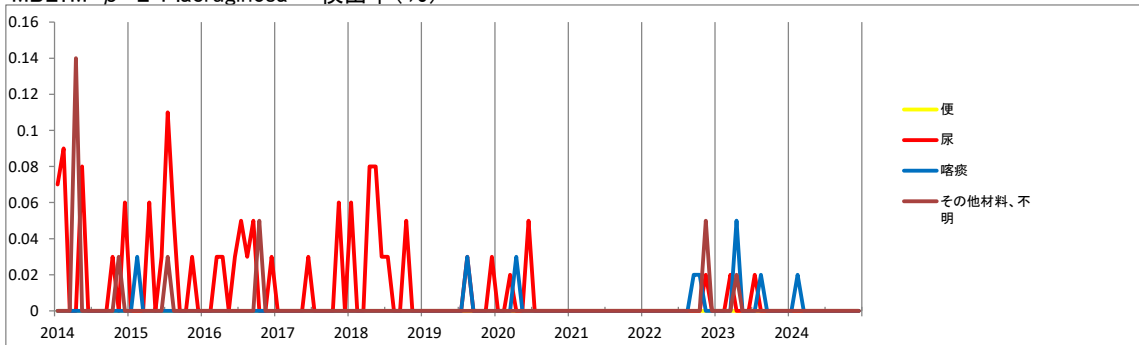
MRSA 検出率(%)



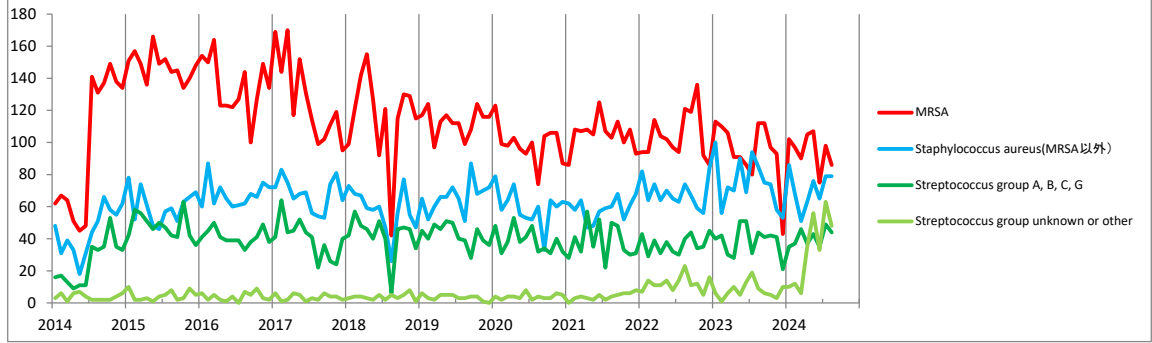
MDRP:M-D-R-P.aeruginosa 検出率(%)



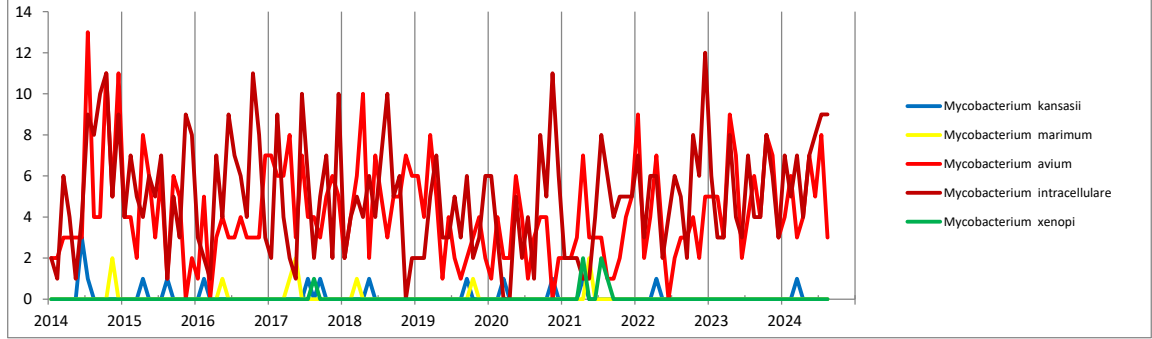
MBL:M-β-L-P.aeruginosa 検出率(%)



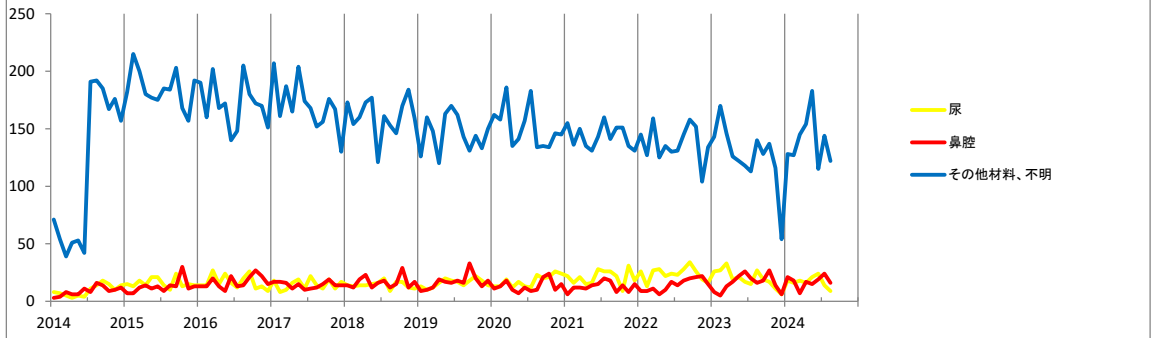
検体材料:喀痰 検出数



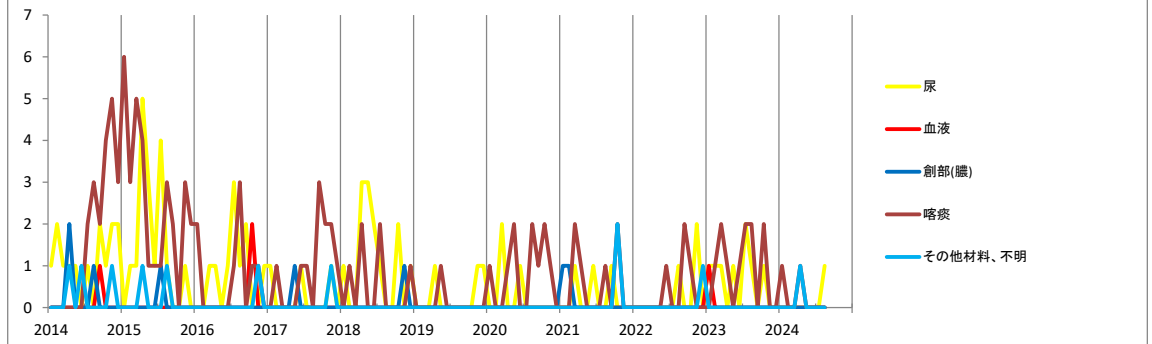
抗酸菌 検出数



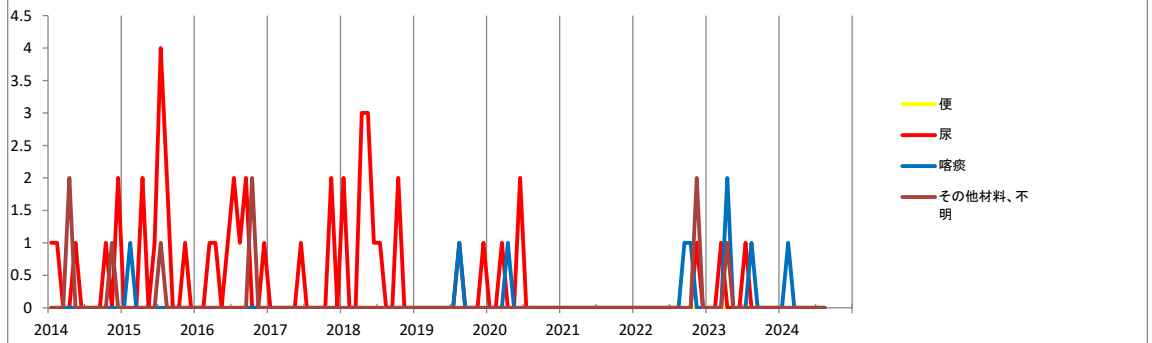
MRSA 検出数



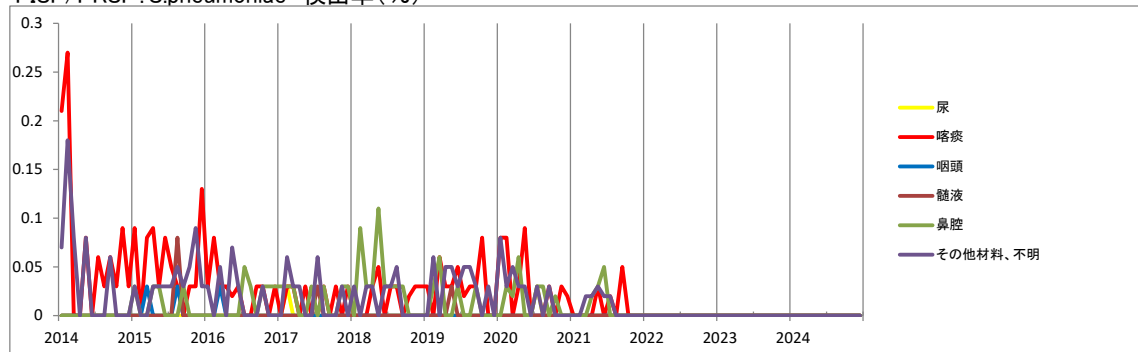
MDRP: M-D-R-P.aeruginosa 検出数



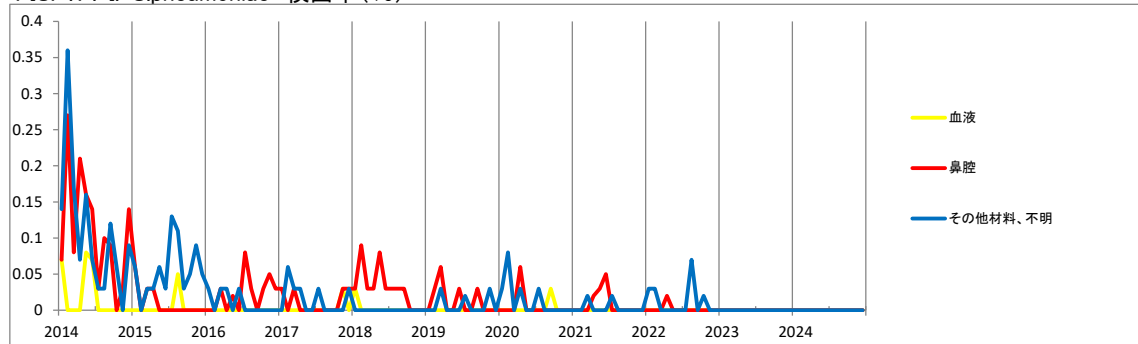
MBL: M-β-L-P.aeruginosa 検出数



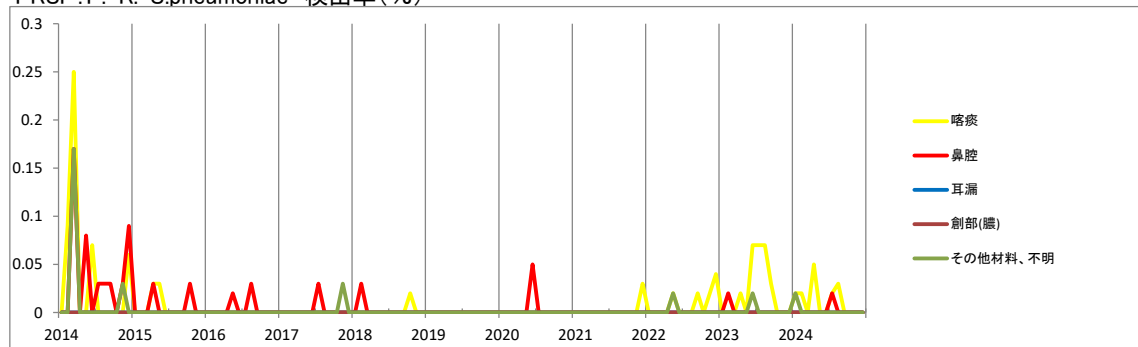
PISP/PRSP: S.pneumoniae 検出率(%)



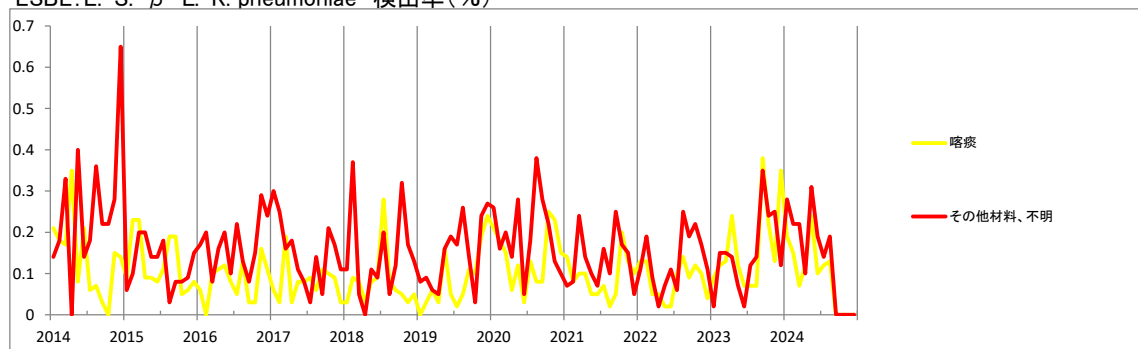
PISP: P.-I.-S.pneumoniae 検出率(%)



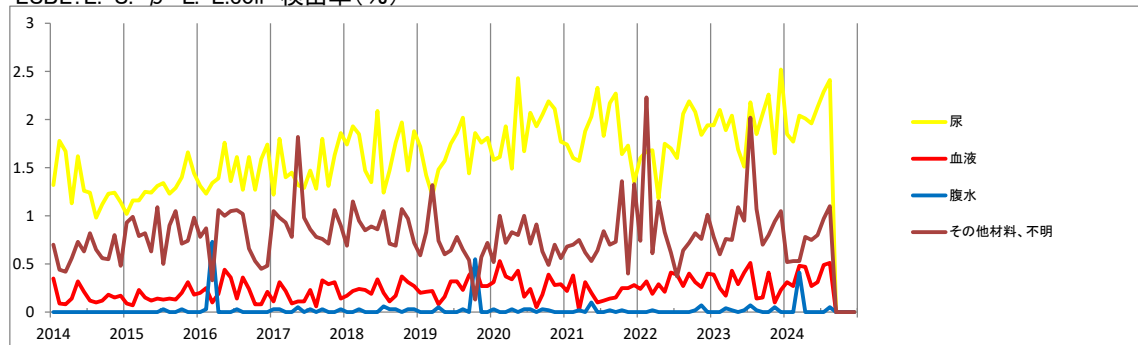
PRSP: P.-R.-S.pneumoniae 検出率(%)



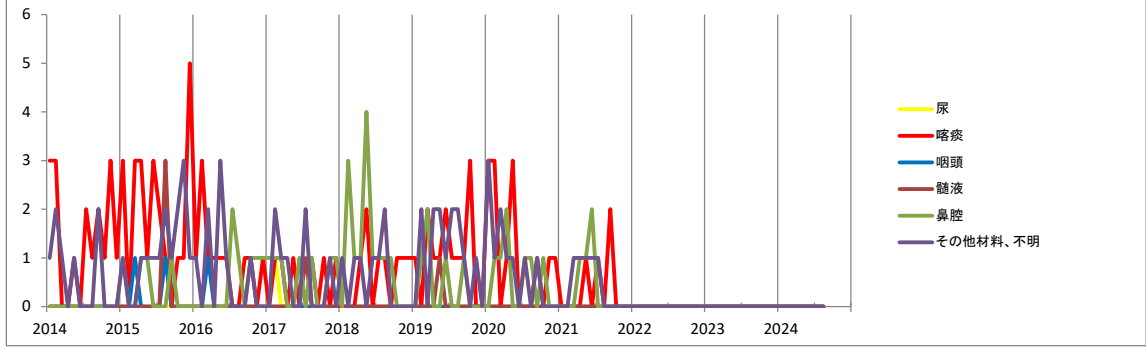
ESBL: E.-S.-β-L.-K. pneumoniae 検出率(%)



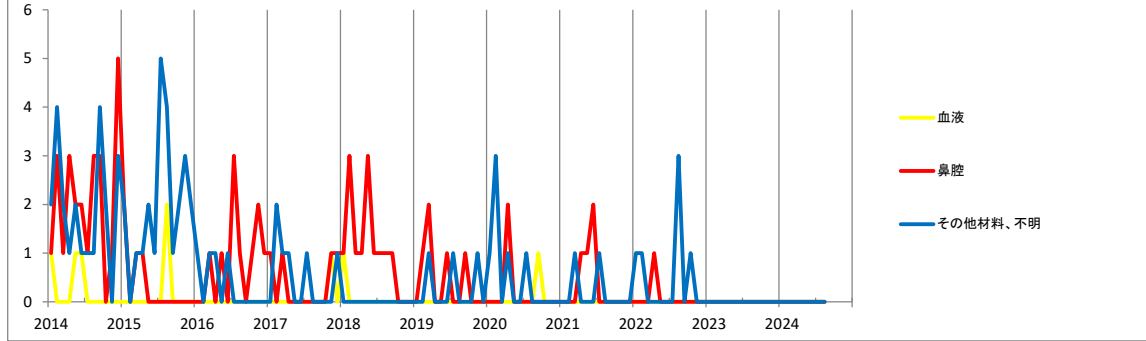
ESBL: E.-S.-β-L.-E.coli 検出率(%)



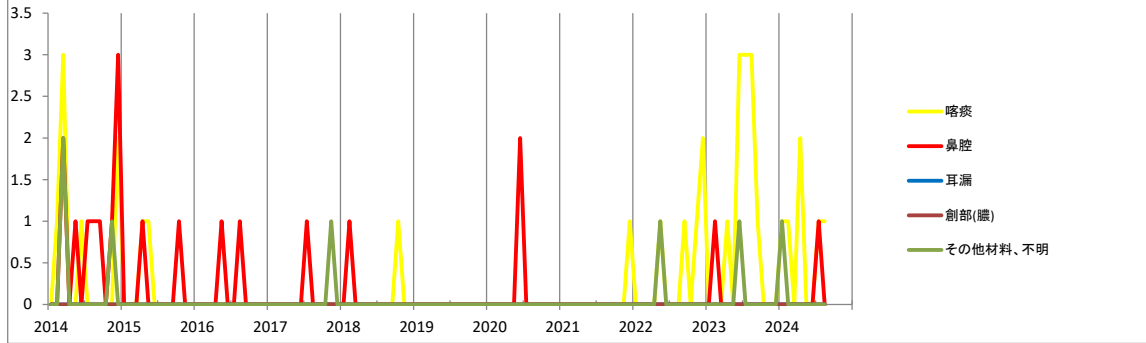
PISP/PRSP: S.pneumoniae 検出数



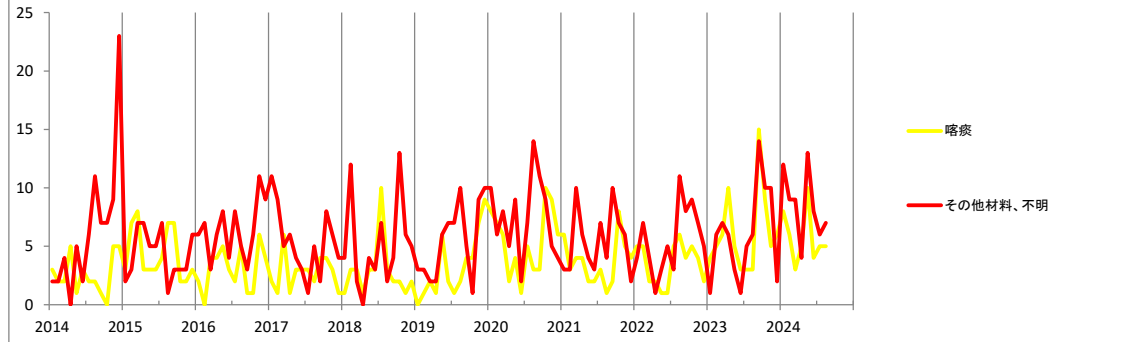
PISP: P.-I.-S.pneumoniae 検出数



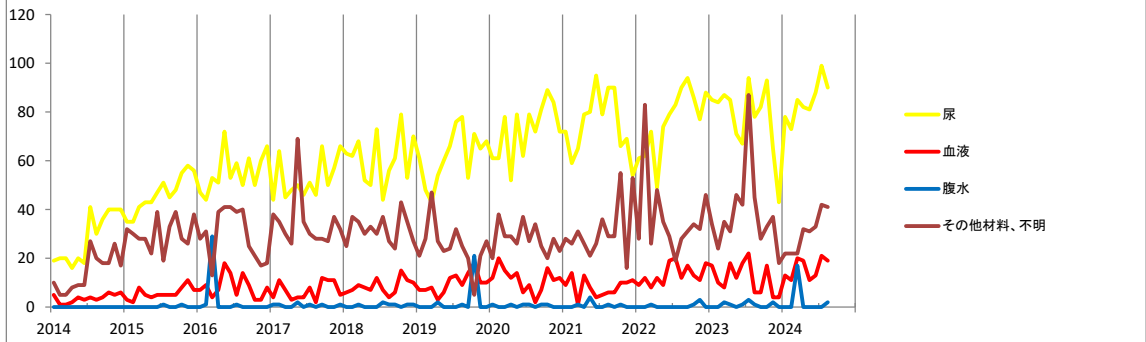
PRSP: P.-R.-S.pneumoniae 検出数



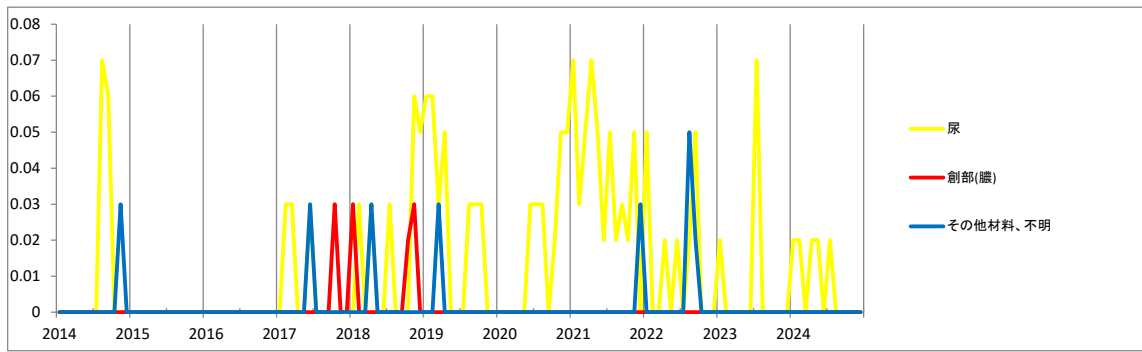
ESBL: E.-S.-β-L.-K. pneumoniae 検出数



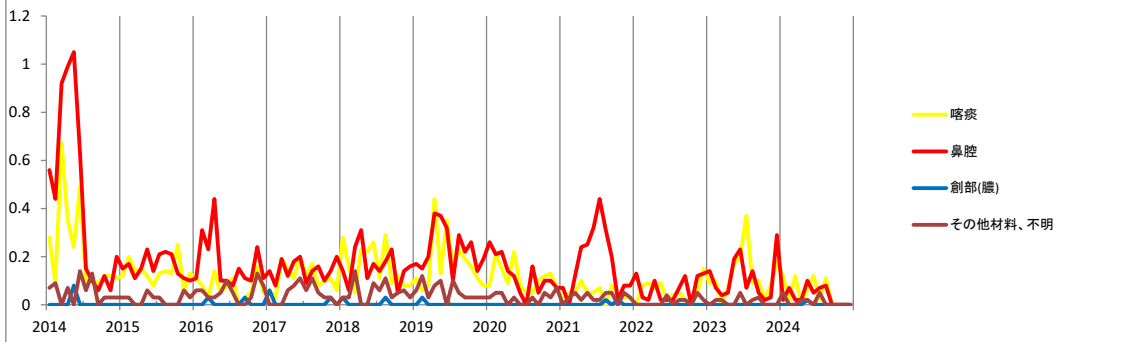
ESBL: E.-S.-β-L.-E.coli 検出数



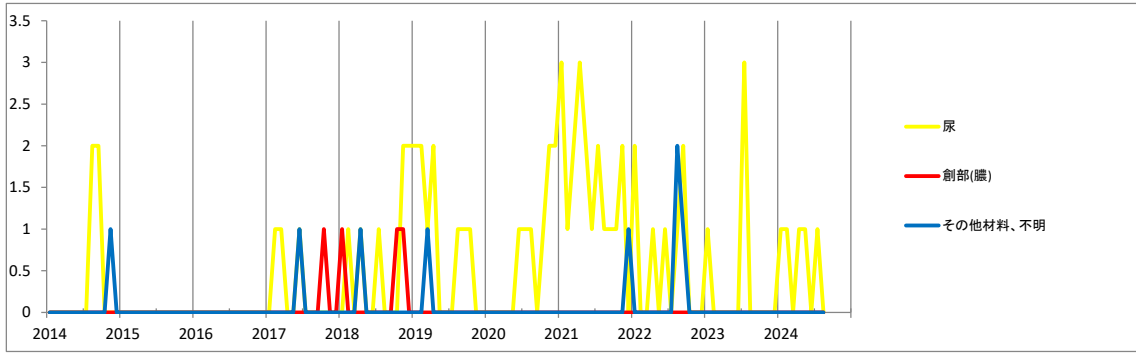
ESBL: E.-S.- β -L.-C.koseri 検出率(%)



BLNAR: β -L-N-A-R-H.influenzae 検出率(%)



ESBL: E.-S.- β -L.-C.koseri 検出数



BLNAR: β -L-N-A-R-H.influenzae 検出数

